

206-1



SRK SERIES DIN 2353



DIN2353 and other threads available upon request.
AISI 316 available but only for minimum quantities.

• Materials

Carbon Steel *EN -10277-3 / AISI 316L*

Seals: NBR, Viton or EPDM

Back-up-ring: PTFE

Springs: *Carbon Steel DIN 17233/84(B)*

• Working temperature (Seals)

	NBR	Viton	EPDM
	+100°C	+200°C	+150°C
	-30°C	-10°C	-40°C

• Applications: Designed for Oil hydraulic Applications according to European Directive 97.23.EC

• Equivalence: Voswinkel Serie RS
Argus Serie RK

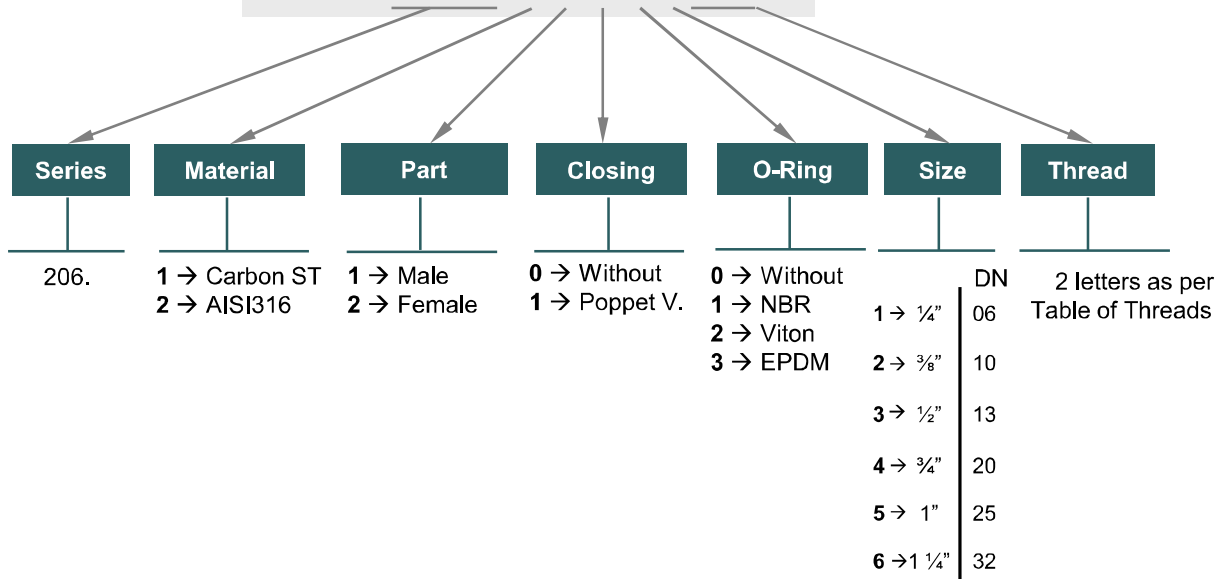
• Sectors: Industrial, Agricultural, Construction machinery.



MODEL STRUCTURE

Example;

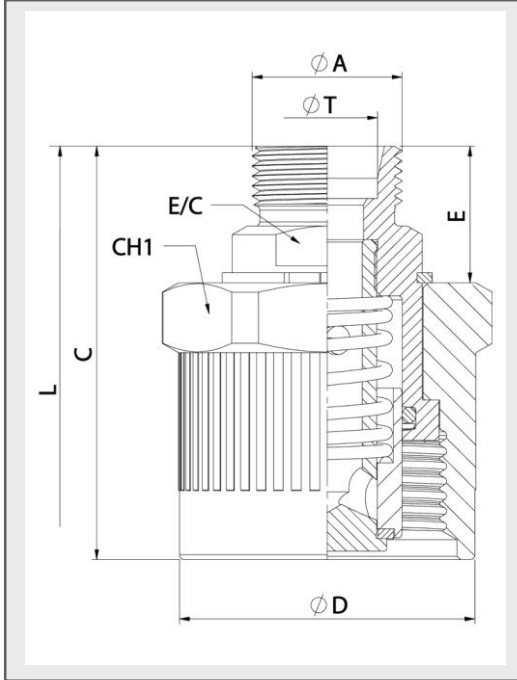
206.12115 AF





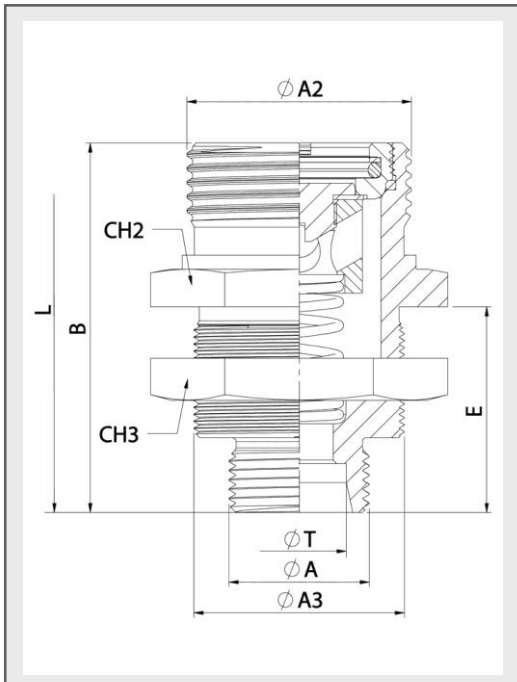
SRK SERIES DIN 2353

206-2



STANDARD MALE MODELS

DN	ØA	ØT	REF.		CH1	E/C	C	ØD	E	L
10	M14x1,5	8L	206.11112JC	400 Bar	32	22	62,5	39	21,5	103,5
	M16x1,5	10L	206.11112JD							
	M18x1,5	12L	206.11112JE							
	M18x1,5	10S	206.11112KE							
	M20x1,5	12S	206.11112KF							
	M22x1,5	15L	206.11112JG							
	M22x1,5	14S	206.11112KG							
M24x1,5	16S	206.11112KH								
13	M18x1,5	12L	206.11113JE	300 Bar	46	24	70	45	20	119
	M22x1,5	15L	206.11113JG							
	M22x1,5	14S	206.11113KG							
	M24x1,5	16S	206.11113KH							
20	M26x1,5	18L	206.11113JI	320 Bar	60	32	83	59,1	27,4	140
	M30x2	22L	206.11114JJ							
	M30x2	20S	206.11114KJ							
	M36x2	25S	206.11114KK							
25	M30x2	22L	206.11115JJ	300 Bar	55	41	105	63,9	35	144
	M30x2	20S	206.11115KJ							
	M36x2	28L	206.11115JK							
	M36x2	25S	206.11115KK							
32	M42x2	30S	206.11115KL	420 Bar	*	55	133	90	38	227
	M45x2	35L	206.11116JM							
	M52x2	38S	206.11116KN							



STANDARD FEMALE MODELS

DN	ØA	ØT	REF.		ØA2	ØA3	CH2	CH3	E	B	L
10	M14x1,5	8L	206.12112JC	400 Bar	Rd 32x3	M30x1	36	36	31	55	103,5
	M16x1,5	10L	206.12112JD								
	M18x1,5	12L	206.12112JE								
	M18x1,5	10S	206.12112KE								
	M20x1,5	12S	206.12112KF								
	M22x1,5	15L	206.12112JG								
	M22x1,5	14S	206.12112KG								
M24x1,5	16S	206.12112KH									
13	M18x1,5	12L	206.12113JE	300 Bar	Rd 36x3	M36x1	41	41	37,5	65	119
	M22x1,5	15L	206.12113JG								
	M22x1,5	14S	206.12113KG								
	M24x1,5	16S	206.12113KH								
20	M26x1,5	18L	206.12113JI	320 Bar	Rd 48x3	M45x1,5	55	55	44	79	140
	M30x2	22L	206.12114JJ								
	M30x2	20S	206.12114KJ								
	M36x2	25S	206.12114KK								
25	M30x2	22L	206.12115JJ	300 Bar	Rd 54x4	M54x1,5	55	60	46	89	144
	M30x2	20S	206.12115KJ								
	M36x2	28L	206.12115JK								
	M36x2	25S	206.12115KK								
32	M42x2	30S	206.12115KL	420 Bar	Rd 79x4	*	55	133	90	38	227
	M45x2	35L	206.12116JM								
	M52x2	38S	206.12116KN								

