



# VCR SERIES



Designed for elevation systems on trucks.  
 Reduced drop pressure.  
 Poppet Valve closing system.

• **Materials**

Carbon Steel EN10277-3

Seals: NBR, Viton or EPDM

Springs: Carbon Steel DIN 17233/84(B)

• **Working temperature (Seals)**

	NBR	Viton	EPDM
	+100°C	+200°C	+150°C
	-30°C	-10°C	-40°C

• **Applications:** Designed for Oil hydraulic Applications according to European Directive 97.23.EC Special for American market

• **Sectors:** Industrial

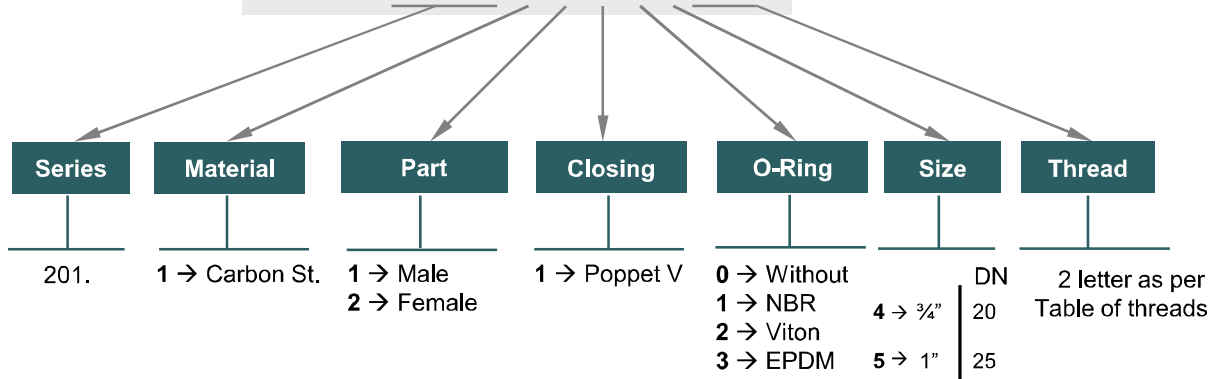


• **Equivalence:** FASTER CVE  
 EDBRO

**MODEL STRUCTURE**

Example;

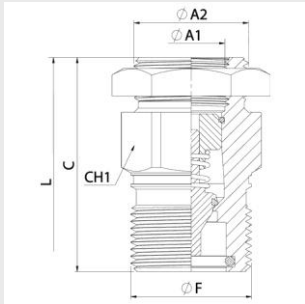
**201.11114 AE**




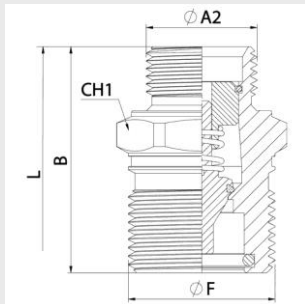



# VCR SERIES

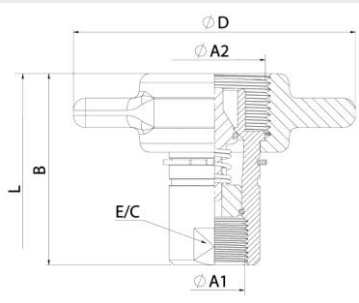
201-2




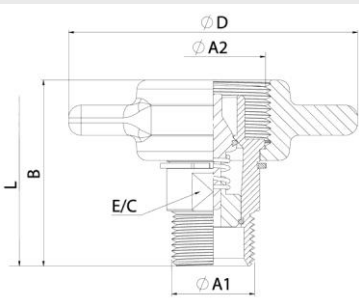
MALE								
DN	ØA1	ØA2	CH1	C	ØF	L	REF.	
20	3/4" BSP	1 1/4"	46	78	44	138	201.11114AE	250 Bar
25	1" BSP	BSP	55	83	53,60	148	201.11115AF	230 Bar




MALE								
DN	ØA2	CH1	B	ØF	L	REF.		
20	1" BSP	46	68	44	118,50	201.11114AQ	250 Bar	



FEMALE								
DN	ØA1	ØA2	E/C	B	ØD	L	REF.	
20	3/4" BSP	41,50	33	78	115	138	201.12114AE	250 Bar
25	1" BSP	51	40	83	115	148	201.12115AF	230 Bar



FEMALE								
DN	ØA1	E/C	ØA2	B	ØD	L	REF.	
20	1" BSP	33	41,50	74	115	118,50	201.12114AQ	250 Bar