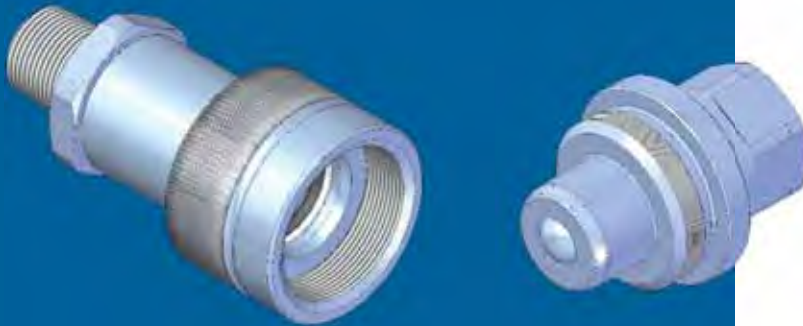


# PVS



Nominal size				Max working pressure	Rated flow	Max flow rate	Min burst pressure			Fluid spillage
DNP	BG	ISO	mm				Male	Female	Coupled	
06	1	6.3	3,7	70	5	10	150	200	220	0,2
10	2	10	4,8	70	9	20	150	200	220	0,6

## Caratteristiche tecniche

- Intercambiabilità: con i principali produttori
- Occlusione: sfera
- Aggancio: a vite
- Materiale: acciaio
- Finitura: Zn-Fe (Cr III)
- Filettature: BSP – NPT
- Guarnizioni standard: NBR
- Temperatura d'esercizio: -25 °C +100 °C
- Guarnizioni opzionali: FKM, EPDM o altro
- Pressioni di esercizio: 700 bar
- Connessione in pressione: consentita (lato maschio o lato femmina)

## Technical data

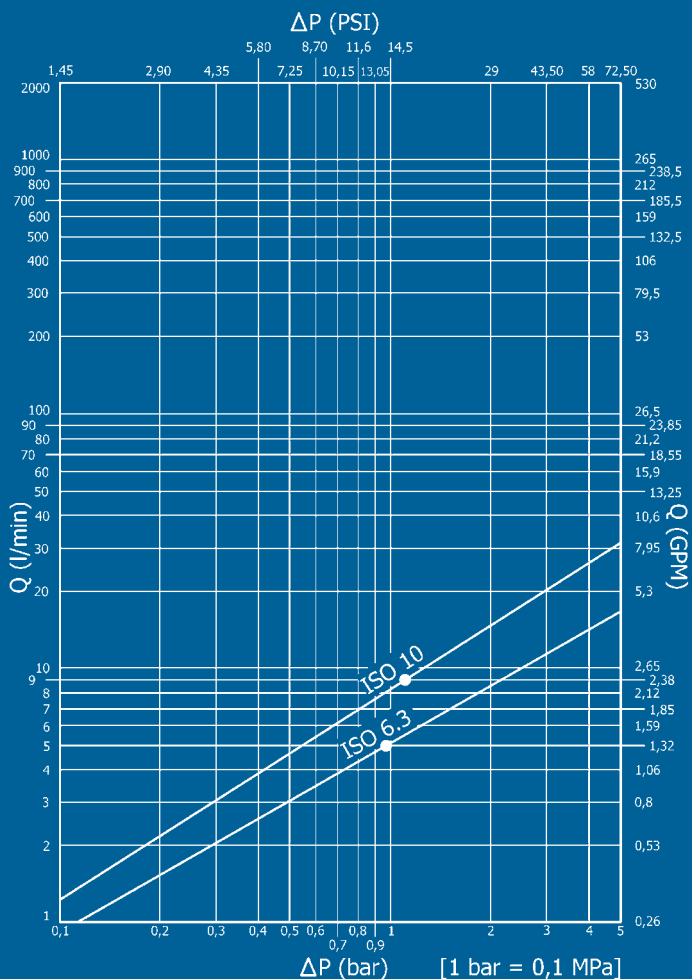
- Interchange: with the main producers
- Occlusion: ball
- Locking: screw
- Material: steel
- Finishing: Zn-Fe (Cr III)
- Threads: BSP – NPT
- Standard seals: NBR
- Working temperature: -25 °C +100 °C
- Optional seals: FKM, EPDM or more
- Working pressure: 700 bar
- Connection under pressure: allowed (both male or female side)

## Technische Merkmale

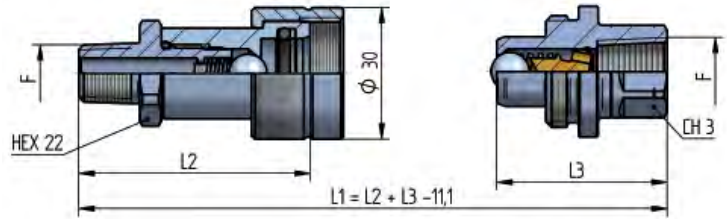
- Austauschbarkeit: mit den wichtigsten Lieferanten
- Verschluss: kugel
- Kupplung: Schraubweise
- Werkstoff: Stahl
- Ausführung: Zn-Fe (Cr III)
- Gewinde: BSP – NPT
- Standard-Dichtungen: NBR
- Betriebstemperatur: -25 °C +100 °C
- Dichtungen nach Wahl: FKM, EPDM, usw.
- Betriebsdruck: 700 bar
- Kuppeln unter Druck: erlaubt (Steckerseite oder Muffenseite)

## Caracteristiques techniques

- Intercambiabilité: avec les principaux producteurs
- Obturation: bille
- Accrochage: a vissé
- Matériel: acier
- Traitement: Zn-Fe (Cr III)
- Taraudage: BSP – NPT
- Joints standard: NBR
- Température de service: -25 °C +100 °C
- Joints facultatifs: FKM, EPDM, ect.
- Pression de service: 700 bar
- Connexion sous pression: possible (côté male ou femelle)

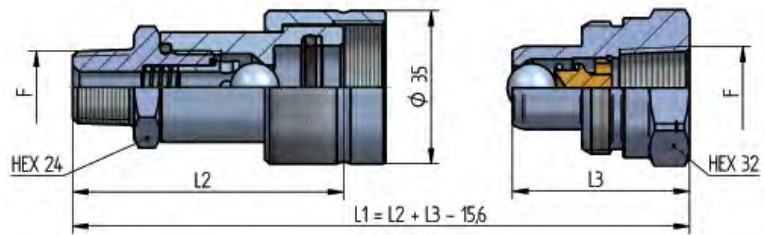


**PVS DN06 - BG 1 - ISO 6.3**



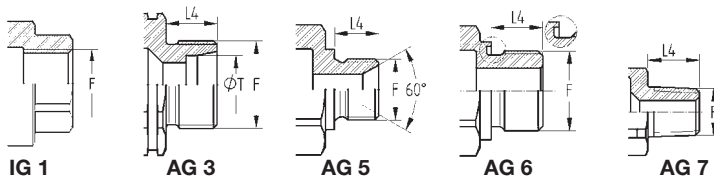
THREADS	L2	CH3	L3	L4	F	STANDARD	FEMMINA - FEMALE - MUFFE - FEMELLE			MASCHIO - MALE - STECKER - MALE		
							COD. F	Weight (g)	Packaging (pcs.)	COD. M	Weight (g)	Packaging (pcs.)
<b>IG 1</b>	56	19	39		NPT 1/4"	ANSI B1.20.3	PVS3.0606.012	162	100	PVS1.0606.013	87	120
		30	39		NPT 3/8"	ANSI B1.20.3				PVS1.0610.013	131	100
<b>AG 7</b>	53	19	73,5	14	NPT 1/4"	ANSI B1.20.3	PVS3.0606.022	130	100	PVS3.0606.023	150	66
						NPT 3/8"						
<b>AG 5</b>	51,5			10,5	BSP 1/4"	JIS B8363	PVS3.0606.212	132	100			

**PVS DN10 - BG 2 - ISO 10**



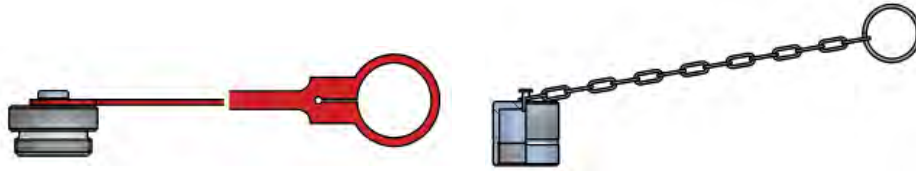
THREADS	L2	L3	L4	ØT	F	STANDARD	FEMMINA - FEMALE - MUFFE - FEMELLE			MASCHIO - MALE - STECKER - MALE					
							COD. F	Weight (g)	Packaging (pcs.)	COD. M	Weight (g)	Packaging (pcs.)			
<b>IG 1</b>	66,5	40,5			NPT 1/4"	ANSI B1.20.3	PVS3.1010.112	249	70	PVS1.1006.013	165	100			
		66	40,5		NPT 3/8"	ANSI B1.20.3				PVS3.1010.012	250	70	PVS1.1010.003	144	100
			40,5		NPT 3/8"	ANSI B1.20.3				PVS3.1010.012	250	70	PVS1.1010.013	145	100
			40,5		RC 3/8"	UNI ISO 7/1				PVS3.1010.012	250	70	PVS1.1010.043	145	100
<b>AG 7</b>	64,5	62	62	14	NPT 1/4"	ANSI B1.20.3	PVS3.1006.022	219	70	PVS3.1010.022	221	70			
					NPT 3/8"	ANSI B1.20.3									
					R 3/8"	UNI ISO 7/1							PVS3.1010.042	222	70
					R 1/2"	UNI ISO 7/1							PVS3.1013.042	246	70
<b>AG 6</b>	64,5	63	12		BSP 3/8"	DIN 3852-11-E	PVS3.1010.232	231	70	PVS3.1010.233	200	100			
<b>AG 5</b>	62,5	64,5	63	12	BSP 3/8"	DIN 3852-2-A	PVS3.1010.212	224	70	PVS3.1010.222	231	70			
					BSP 3/8"	DIN 3852-2-B							PVS3.1010.222	231	70
<b>AG 3</b>	62			10S	M18x1,5	ISO 8434-1-S	PVS3.1018.402	225	70						

**THREADS**



**PLASTIC**


NOMINAL SIZE			FEMALE DUST PLUG			MALE DUST CAP			COLOUR	MATERIAL
DNP	BG	ISO	COD. F	Weight (g)	Packaging (pcs.)	COD. M	Weight (g)	Packaging (pcs.)		
10	2	10	SPVS.10001	16	50	SPVS.10001	16	50	RED	Polyethylene
10	2	10	SPVS.10041	16	50	SPVS.10041	16	50	BLACK	Polyethylene

**METAL**


NOMINAL SIZE			FEMALE DUST PLUG			MALE DUST CAP			MATERIAL
DNP	BG	ISO	COD. F	Weight (g)	Packaging (pcs.)	COD. M	Weight (g)	Packaging (pcs.)	
06	1	6.3	SPVS.06100	80	150	SPVS.06101	85	100	Steel with chain
06	1	6.3	SPVS.06102	36	150	SPVS.06103	34	100	Aluminium with chain
10	2	10	SPVS.10100 C	119	100	SPVS.10103 C	109	50	Steel with chain
10	2	10	SPVS.10102 C	49	100				Aluminium with chain
10	2	10	SPVS.10100 L	114	50	SPVS.10103 L	104	50	Steel with plastic tongue
10	2	10	SPVS.10102 L	44	50				Aluminium with plastic tongue

**GUARNIZIONI DI RICAMBIO / SPARE PARTS / ERSATZDICHTUNGEN / JOINTS**

AL CODICE DELLA GUARNIZIONE IN NBR AGGIUNGERE 'E' PER EPDM o 'V' PER VITON

TO THE NBR GASKET CODE ADD 'E' FOR EPDM OR 'V' FOR VITON

ZU DER ARTIKELNR. DER NBR DICHTUNG GEBEN SIE 'E' FUER EPDM ODER 'V' FUER VITON AN

AU CODE DU JOINT EN NBR JOINDRE 'E' POUR EPDM OU 'V' POUR VITON

NOMINAL SIZE			FEMALE GASKET	
DNP	BG	ISO	NBR	PTFE
06	1	6.3	PVS.006.120	PVS.006.130
10	2	10	PDV.010.120	PVS.010.130